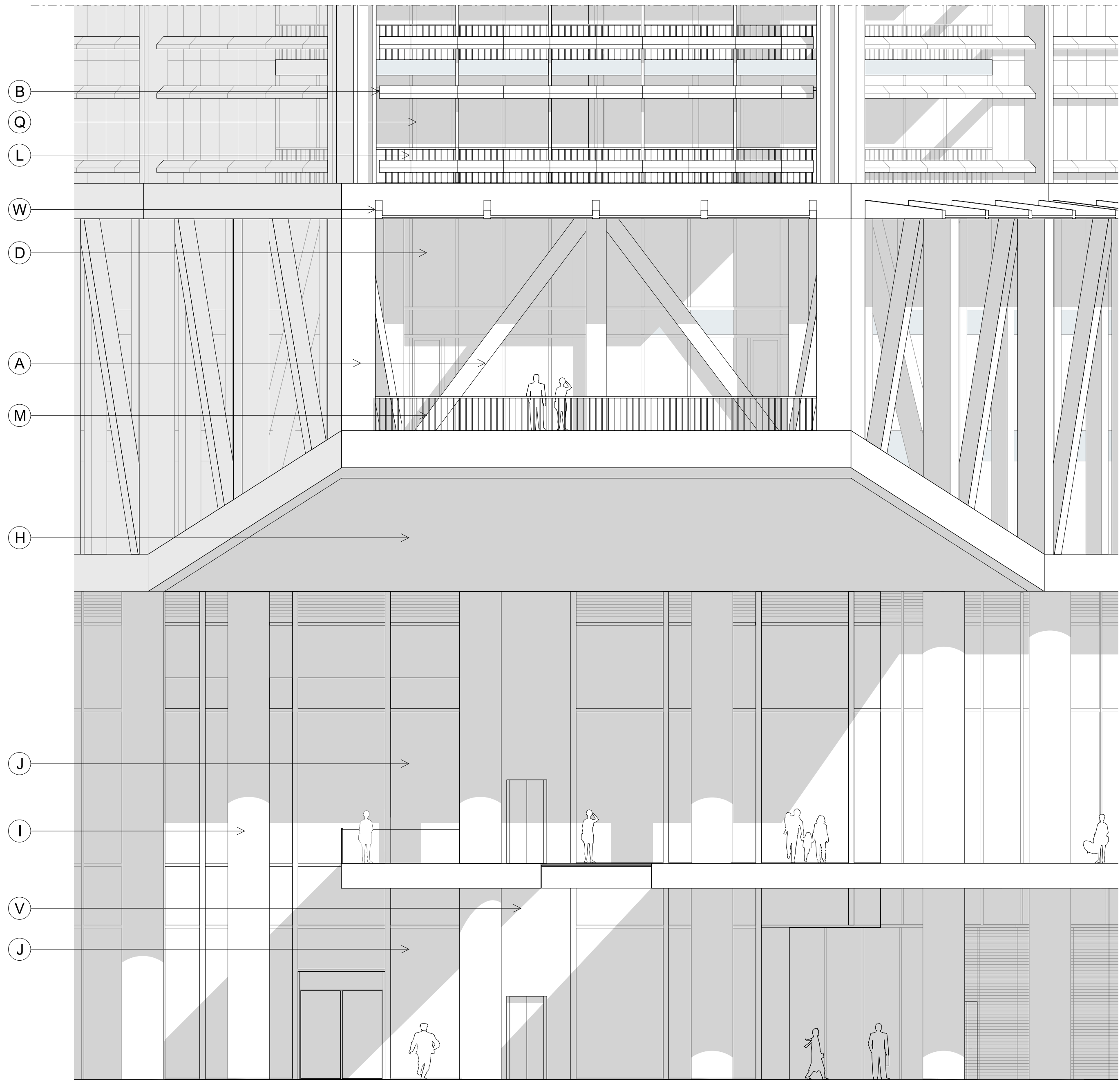
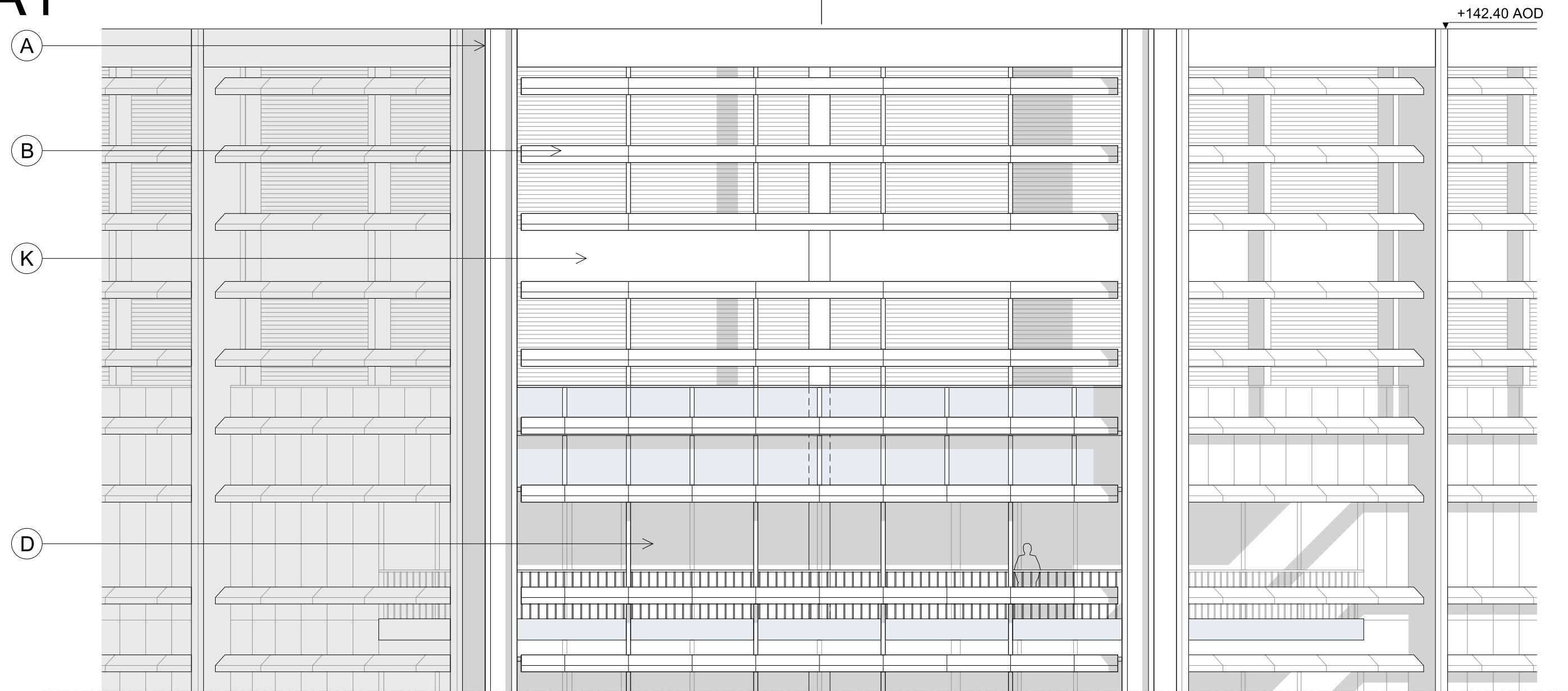
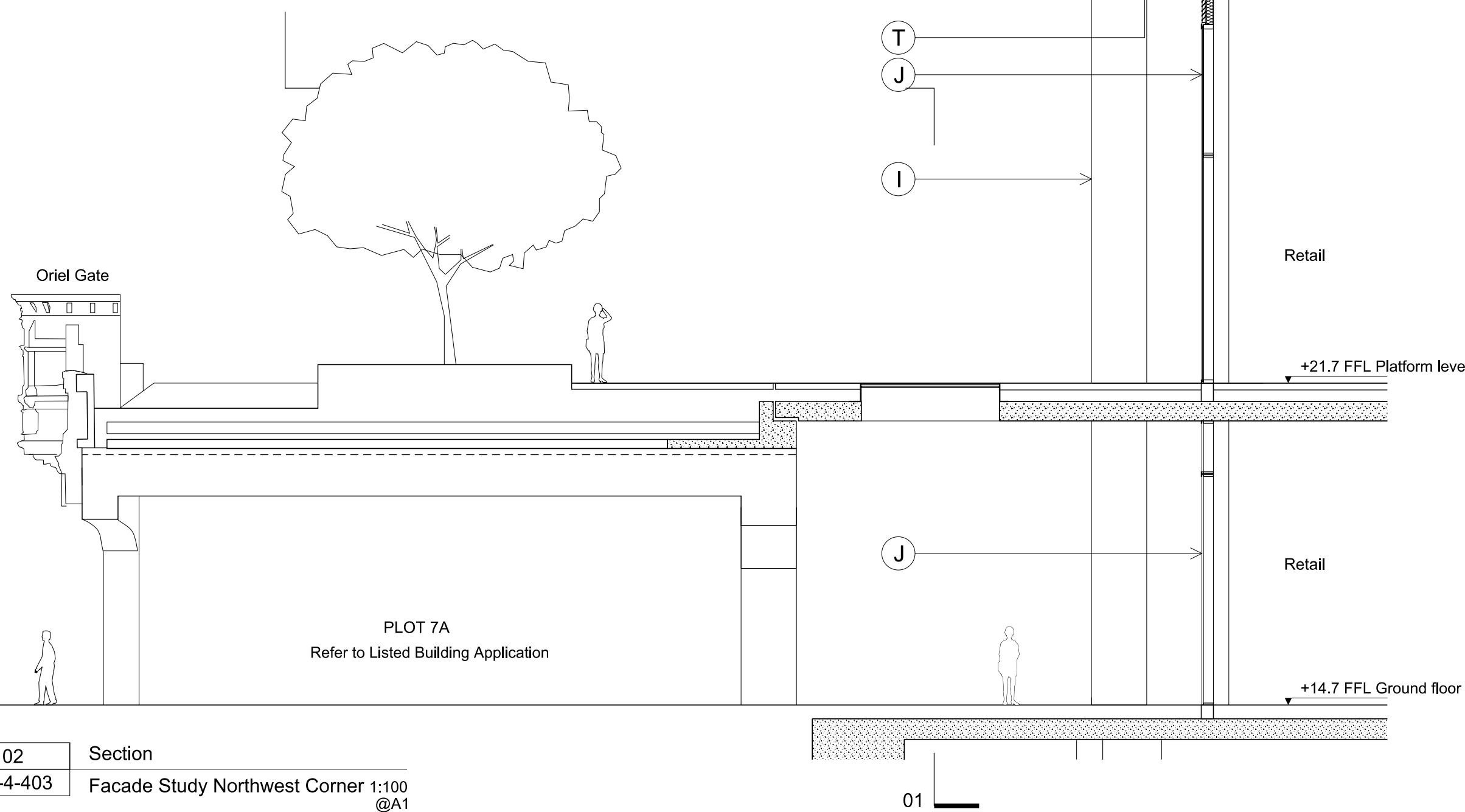
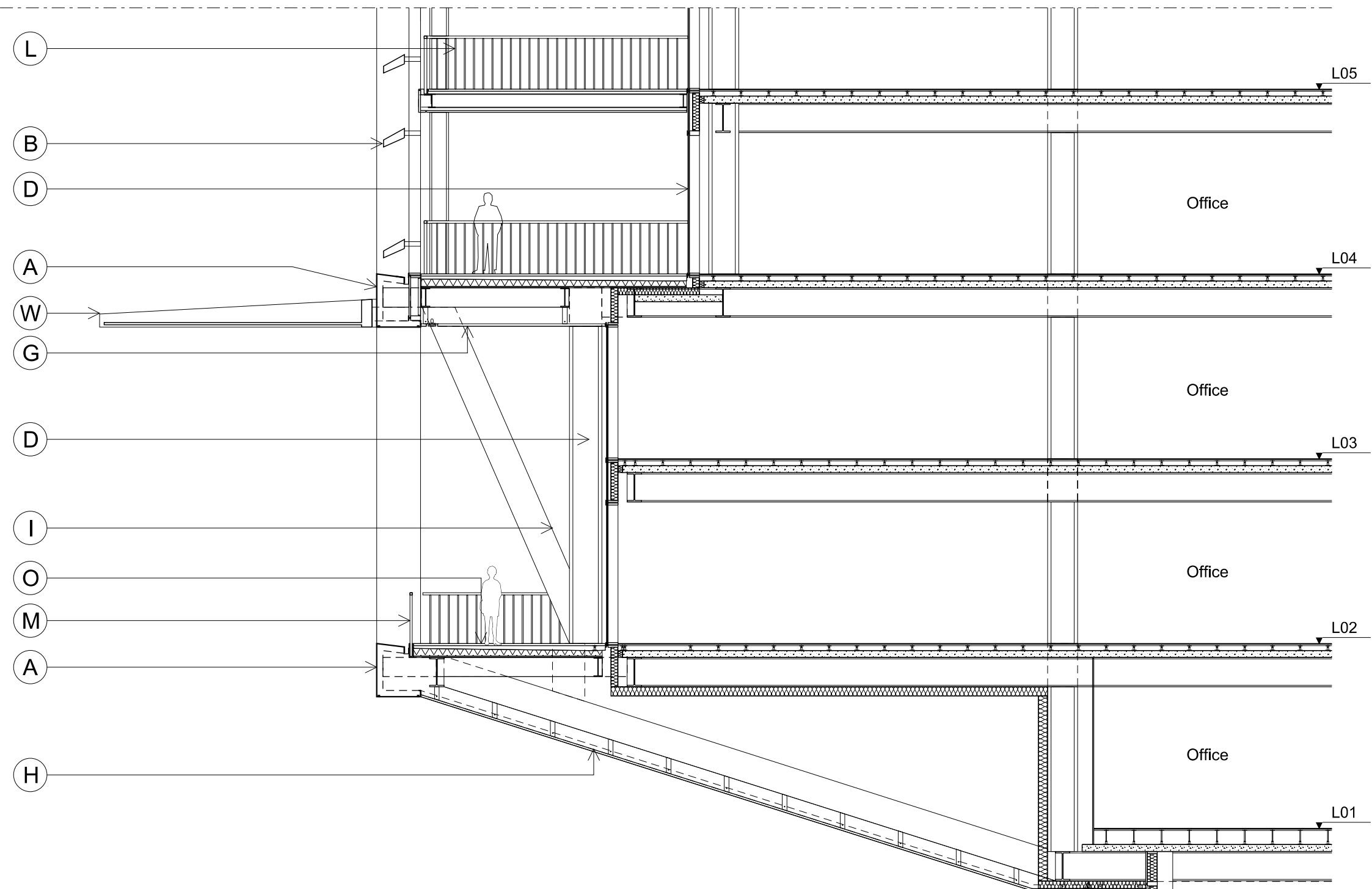
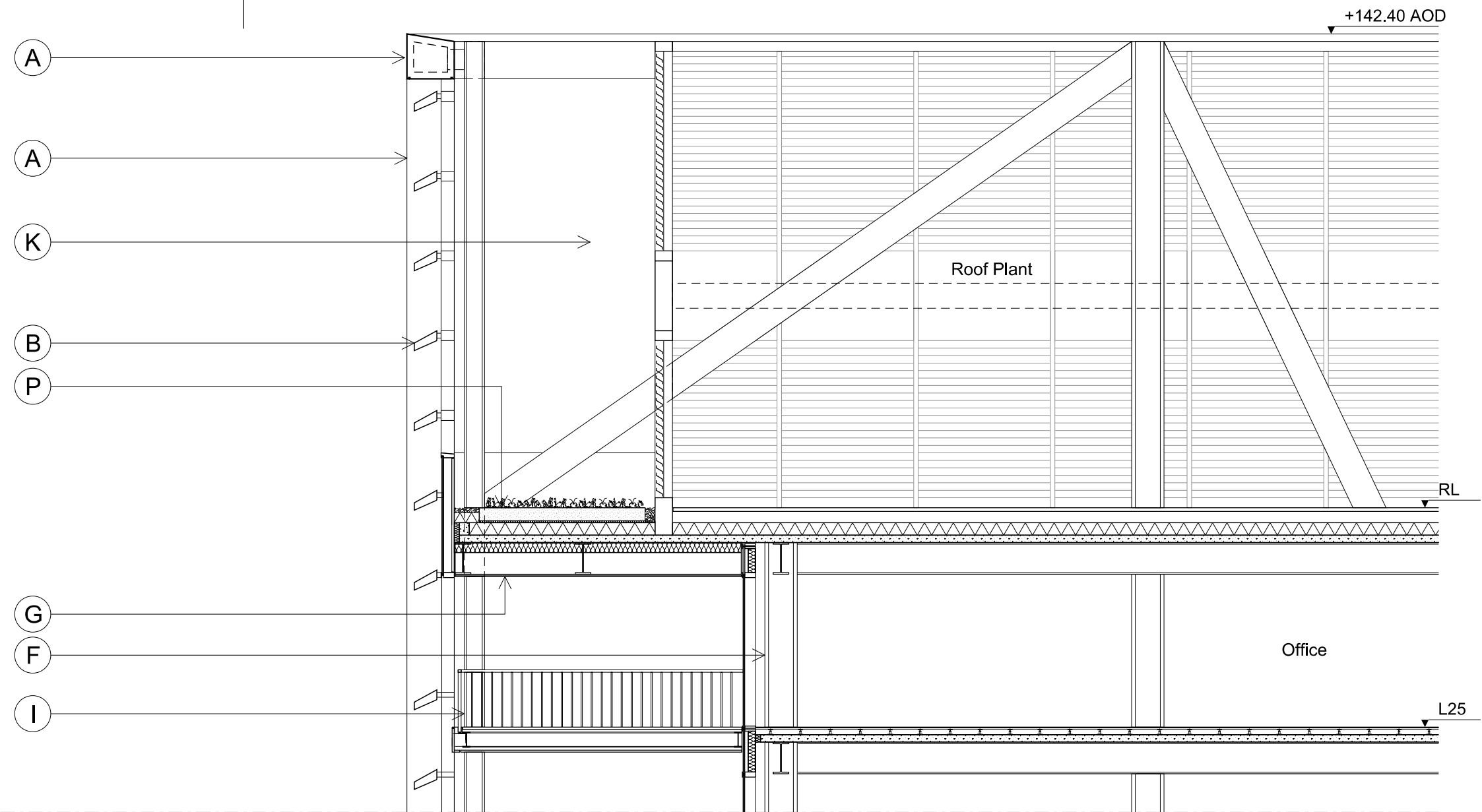


A1



01 Elevation
05-4-403 Facade Study Northwest Corner 1:100 @A1

02



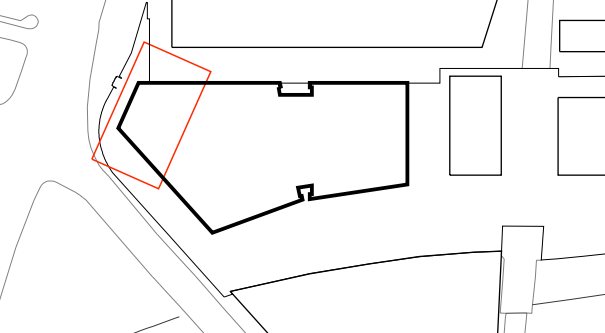
02 Section
05-4-403 Facade Study Northwest Corner 1:100 @A1

This drawing is to be read in conjunction with all other contract documents and specifications and all other consultants drawings.
All levels and dimensions should be checked on site and any discrepancies notified to the Architect prior to proceeding with works.
THIS DRAWING IS COPYRIGHT.
No drawing shall be reproduced in any form without prior written permission of Eric Parry Architects.

KEY

- A Painted metal external cladding / structure
- B White metal brise soleil with aluminium / stainless steel sub-frame and fixed to curtain wall with aluminium / stainless steel brackets
- C Dark metal vertical fins with aluminium / stainless steel sub-frame and fixed to curtain wall with aluminium / stainless steel brackets
- D Aluminium utilised curtain walling with insulated glass units - dark cappings and frame
- E Glazed spandrel panel with ceramic frit
- F Painted internal steel column
- G Panelled soffit cladding to underside of terraces and balconies
- H Dark reflective soffit
- I External columns
- J Full height reception / shop front glazing. Curtain wall system with fabricated metal profiles, high level insulation backed louvre grille to retail units
- K PPC louvre roof plant screen
- L Balustrade with metal railing and metal handrail to inset balcony
- M Painted metal railings to L1-3 balcony and terraces
- N Facia to balcony
- O External flooring to terrace/balcony
- P Extensive green roof
- Q Doors for access onto terrace and balconies, dark framing to match curtain walling.
- R Roof garden planters
- S Roof garden pergola structure
- T Public realm lighting
- U BMU track with accessible external plank flooring
- V Architectural concrete
- W Wind mitigation fins - painted steel and glass panes

P02	Issued for Planning	19 09 19	EF	TN
P01	Issued for Planning	25 06 19	EF	TN
P00	Issued for Approval	25 04 19	ELP	ASM
Rev	Description	Date	By	Chk
key	plan			



28 - 42 Banner Street
London EC1Y 8QE
Tel 020 7608 9600
Fax 020 7608 9601
www.ericparryarchitects.co.uk

Eric Parry Architects

client
BALLYMORE & HAMMERSON

project
THE GOODSYARD PLOT 2

drawing title
FACADE STUDY
NORTHWEST CORNER ('PROW')

drawing no
EPA-TGY-05-4-403

scale
1 : 100
@ A1

revision
P02